

**WARDS**  
**SEA KING**

**OUTBOARD  
MOTOR  
PARTS CATALOG**

**1975**

MW-101

**15**

**B.I.A. CERTIFIED BRAKE H.P. AT 5100 R.P.M.**

**MODEL  
VWB-52115**

Printed in U.S.A.

IGD

**SEA KING**—SOLD EXCLUSIVELY BY **MONTGOMERY WARD**

# Engine Cover and Support Plate

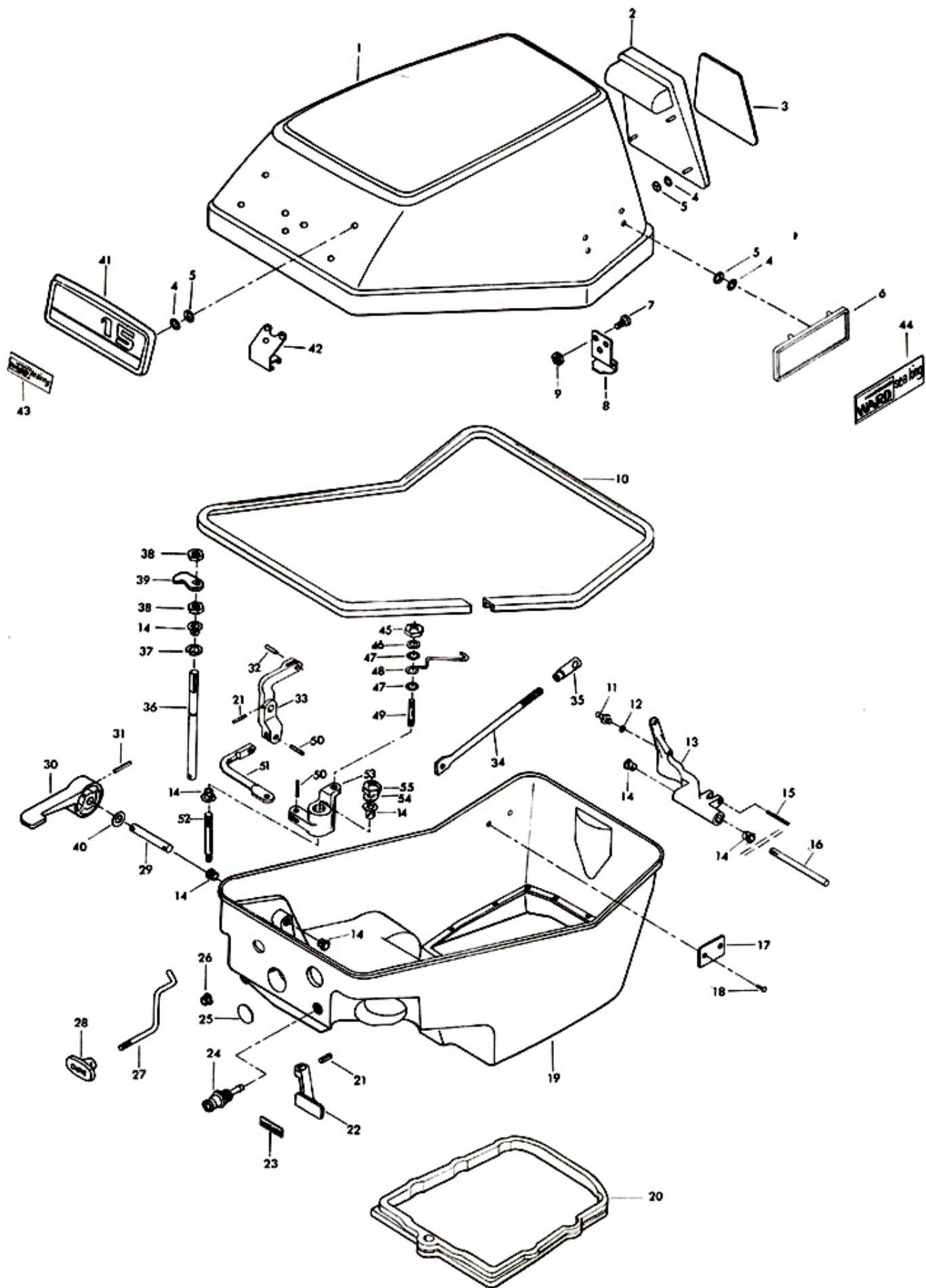
| ILLUS. NO. | PART NO.  | QTY. | DESCRIPTION                              |
|------------|-----------|------|--|
| 1          | S447712   | 1    | Cover, engine w/bracket and retainer     |
| 2          | 392269    | 1    | Handle, tilt                             |
| 3          | 496180    | 1    | Trim, engine cover, rear                 |
| 4          | 85735     | 17   | Seal, medallion                          |
| 5          | 1753      | 17   | Fastener                                 |
| 6          | 446392    | 2    | Plate, side                              |
| 7          | 1475      | 6    | Fill hd screw, 10 - 24 x 1/2             |
| 8          | A392480   | 1    | Retainer, engine cover w/screws and nuts |
| 9          | 7011      | 6    | Elastic stop nut, 10 - 24                |
| 10         | 392756    | 1    | Packing, support plate                   |
| 11         | 98273     | 1    | Stud, gear shift rod connector           |
| 12         | 8058      | 1    | Internal tooth lockwasher                |
| 13         | 286876    | 1    | Lever, gear shift                        |
| 14         | 307818    | 8    | Bearing                                  |
| 15         | 8542      | 1    | Spring pin                               |
| 16         | 286871    | 1    | Pin, gear shift lever                    |
| 17         | A197395-3 | 1    | Plate, identification w/screws           |
| 18         | 1293      | 2    | Drive screw                              |
| +19        | A495038   | 1    | Plate, support                           |
| 20         | 286989-1  | 1    | Seal, support plate                      |
| 21         | 8547      | 2    | Spring pin                               |
| 22         | 392469    | 1    | Handle, cover latch                      |
| 23         | 392585    | 1    | Decal, cover latch                       |
| 24         | 197767-1  | 1    | Bushing, fuel line                       |
| 25         | A343226   | 1    | Plug                                     |
| 26         | 197319    | 1    | Bearing, choke rod                       |
| 27         | 392503    | 1    | Rod, choke                               |
| 28         | 392547    | 1    | Knob, choke                              |
| 29         | 392417    | 1    | Shaft, gear shift handle                 |
| 30         | 392614    | 1    | Handle, gear shift                       |
| 31         | 8549      | 1    | Spring pin                               |
| 32         | 8552      | 1    | Spring pin                               |
| +33        | 495619    | 1    | Lever, shift handle shaft                |
| 34         | 392611    | 1    | Rod, gear shift                          |
| 35         | 286685    | 1    | Connector, gear shift rod                |
| 36         | 392763    | 1    | Shaft, cover latch                       |
| 37         | 73741-1   | 1    | Retaining ring                           |
| 38         | 1518      | 2    | Jam nut, 5/16 - 18                       |
| 39         | 392777    | 1    | Cam, cover latch                         |
| 40         | 8049      | 1    | Bowed washer                             |
| 41         | 496711    | 1    | Plate, front                             |
| 42         | A392774   | 1    | Bracket, cover latch w/screws and nuts   |
| 43         | A447512   | 1    | Insert, plate front                      |
| 44         | A446892   | 2    | Insert, side plate                       |
| 45         | 1804      | 1    | Stop nut, 10 - 32                        |
| 46         | 8011      | 1    | Plain washer                             |
| 47         | 184579    | 2    | Seal                                     |
| +48        | 495263    | 1    | Link                                     |
| 49         | 286134    | 1    | Stud                                     |
| 50         | 8537      | 2    | Spring pin                               |
| +51        | 495531    | 1    | Rod, interlock                           |
| 52         | 78209-2   | 1    | Stud                                     |
| +53        | 495819    | 1    | Pivot, starter interlock                 |
| 54         | 1739      | 1    | Plain washer                             |
| 55         | 2002      | 1    | Lock nut, 5/16 - 18                      |

+Denotes new part number

## NOTE

To obtain identification plate, order part number A197395-3. Order for identification plate must be accompanied by a notarized statement from the dealer, customer and statement from a law enforcement agency verifying that the plate is lost or damaged beyond repair. This statement must also include name and address of owner and model and serial number of motor.

# ENGINE COVER AND SUPPORT PLATE



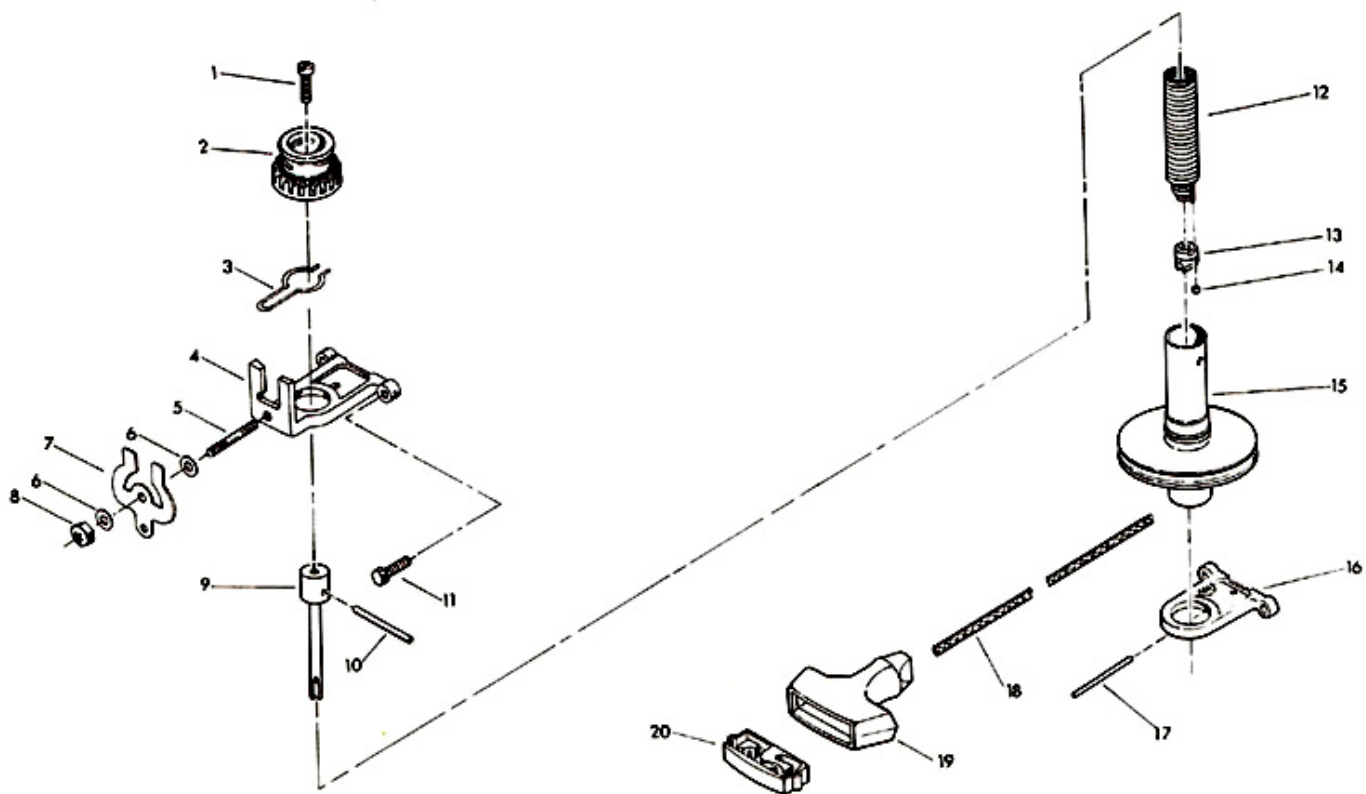
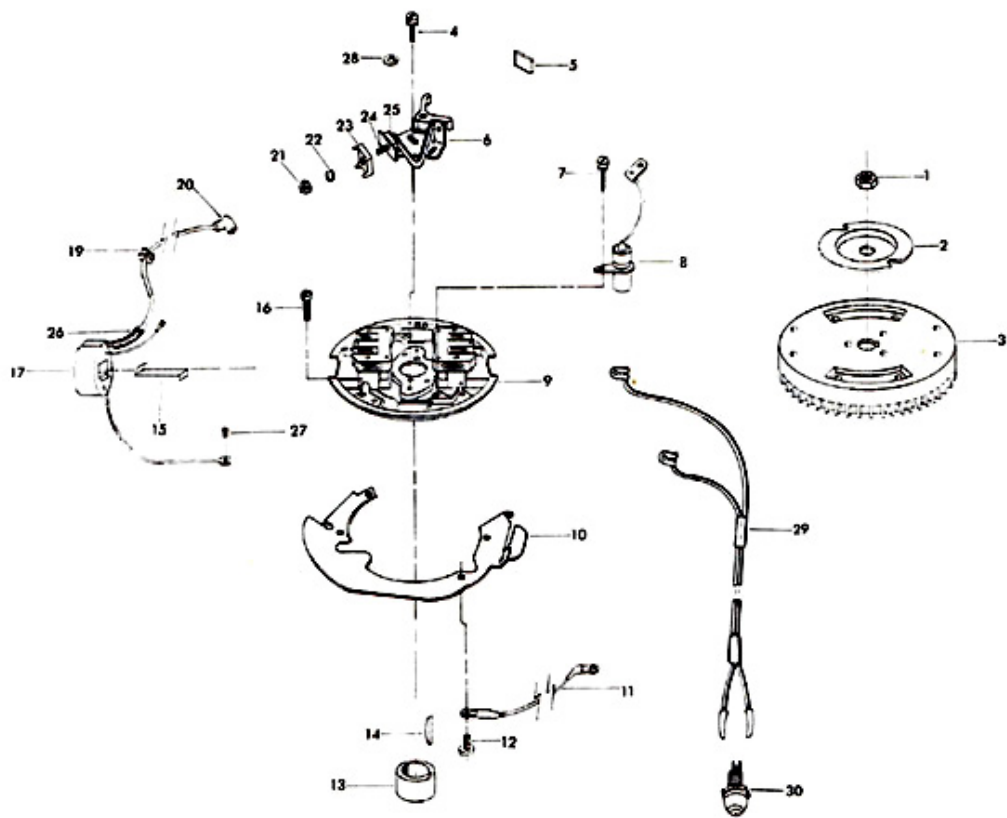


# Magneto

| ILLUS. NO. | PART NO. | QTY. | DESCRIPTION                                  |
|------------|----------|------|--|
| 1          | 1809     | 1    | Hex nut, 1/2 - 20                            |
| 2          | 901456-1 | 1    | Emergency starter collar                     |
| 3          | 302097   | 1    | Flywheel                                     |
| 4          | 12170    | 4    | Contact screw w/lockwasher                   |
| 5          | 12228    | 1    | Cam wiper felt                               |
| 6          | 12153    | 2    | Breaker point set                            |
| 7          | 12083    | 2    | Condenser screw w/lockwasher                 |
| 8          | 12181-1  | 2    | Condenser                                    |
| 9          | 12343    | 1    | Stator plate w/laminations                   |
| 10         | 286192   | 1    | Throttle cam                                 |
| 11         | 289664   | 1    | Wire, stator ground                          |
| 12         | 1075     | 4    | Fill hd screw, 10 - 24 x 1/2                 |
| 13         | 217002   | 1    | Magneto breaker cam                          |
| 14         | 458498   | 1    | Magneto key                                  |
| 15         | 12146    | 2    | Coil wedge spring                            |
| 16         | 1090     | 4    | Fill hd screw w/lockwasher, 10 - 24 x 9/16   |
| 17         | A12345   | 2    | Coil w/lead wire                             |
| 19         | 12088    | 4    | Grommet                                      |
| 20         | K-750-1  | 2    | Sparkie w/spring                             |
| 21         | 12127    | 2    | Stud nut                                     |
| 22         | 8055     | 2    | Lockwasher                                   |
| 23         | 12128    | 2    | Insulator, outside                           |
| 24         | 12142    | 2    | Connection stud                              |
| 25         | 12129    | 2    | Insulator, inside                            |
| 26         | 12141    | 1    | Sleeve                                       |
| 27         | 12114    | 2    | Coil ground terminal screw                   |
| 28         | 12097    | 1    | Breaker arm pivot retaining ring             |
| 29         | 12186    | 1    | Primary terminal wire                        |
| 30         | 436449   | 1    | Shorting switch                              |
|            | 12091    | 1    | Lead wire marker, top (not shown)            |
|            |          | 1    | Magneto complete, order component parts      |
|            |          | 1    | Stator plate complete, order component parts |

# Starter

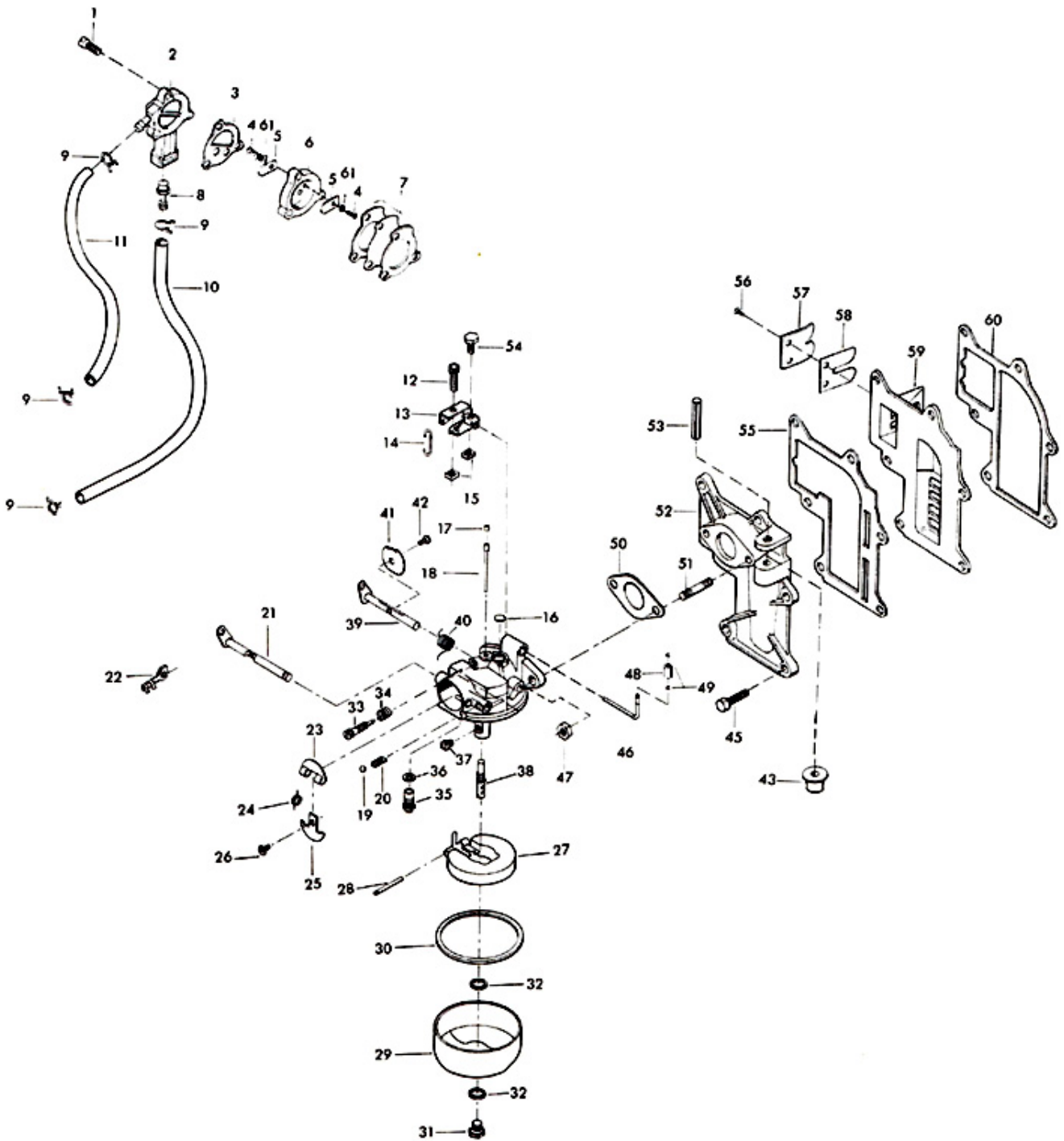
| ILLUS. NO. | PART NO.  | QTY. | DESCRIPTION                              |
|------------|-----------|------|--|
| 1          | 1089      | 1    | Fill hd screw, 10 - 24 x 9/16            |
| 2          | 456674    | 1    | Gear, starter pinion                     |
| + 3        | 487424    | 1    | Starter pinion spring                    |
| + 4        | 487427    | 1    | Bracket, starter upper                   |
| 5          | 286134    | 1    | Stud                                     |
| 6          | 8011      | 2    | Plain washer                             |
| + 7        | 487781    | 1    | Starter interlock                        |
| 8          | 1804      | 1    | Stop nut                                 |
| 9          | 286710    | 1    | Arbor, starter spring                    |
| 10         | 40425     | 1    | Starter pinion pin                       |
| 11         | 1914      | 4    | Hex hd screw, 1/4 - 20 x 3/4             |
| 12         | A286970   | 1    | Starter rewind spring w/end and retainer |
| 13         | 286737-1  | 1    | Retainer, starter rewind spring          |
| 14         | 286930    | 1    | End, starter spring                      |
| 15         | 2A459239  | 1    | Starter spool w/shaft                    |
| 16         | K317427   | 1    | Bracket, starter lower w/spring pin      |
| 17         | 1875      | 1    | Spring pin, starter bracket              |
| 18         | 409232    | 1    | Starter rope                             |
| 19         | 286132    | 1    | Handle, starter rope                     |
| 20         | K286817-1 | 1    | Retainer, starter rope handle            |



# Fuel System

| ILLUS. NO. | PART NO.  | QTY. | DESCRIPTION                                 | ILLUS. NO. | PART NO. | QTY. | DESCRIPTION  |
|------------|-----------|------|---|------------|----------|------|--|
| 1          | 1069      | 3    | Fill hd screw, 10 - 24 x 1 1/16             | 35         | * 010790 | 1    | Inlet needle, seat and gasket                        |
| 2          | 901746-1  | 1    | Fuel pump cover                             | 36         | 010165   | 1    | Inlet seat gasket                                    |
| 3          | 24748     | 1    | Gasket, fuel pump                           | 37         | 011722   | 1    | Main fuel jet (.055)                                 |
| 4          | 1286      | 2    | Pan hd screw, 4 - 40 x 3/16                 | 38         | * 015525 | 1    | Main nozzle  |
| 5          | 18160-1   | 2    | Reed fuel pump                              | 39         | 015757   | 1    | Throttle shaft and lever                             |
| 6          | A24757-3  | 1    | Fuel pump reed plate w/reeds and screws     | 40         | * 015526 | 1    | Throttle shaft return spring                         |
| 7          | 2A24747-1 | 1    | Fuel pump diaphragm w/gaskets               | 41         | 016878   | 1    | Throttle shutter                                     |
| 8          | 901811    | 1    | Fuel pump filter                            | 42         | * 010280 | 1    | Throttle shutter retaining screw and lockwasher      |
| 9          | 2706772   | 4    | Hose clamp                                  | 43         | 286435-3 | 1    | Pulley starter rope                                  |
| 10         | 40253     | 1    | Fuel line                                   | 45         | 1914     | 6    | Hex hd screw, 1/4 - 20 x 3/4                         |
| 11         | A24754-1  | 1    | Fuel line w/clamps                          | 46         | 286316   | 1    | Throttle cam follower                                |
| 12         | 1834      | 1    | Fill hd screw, 10 - 24 x 7/8                | 47         | 1490     | 2    | Hex nut, 1/4 - 20                                    |
| 13         | A286190-1 | 1    | Arm, carburetor adjusting                   | 48         | 78318    | 1    | Roller, throttle cam follower                        |
| 14         | 66193     | 1    | Throttle link                               | 49         | 78410    | 2    | Retainer   |
| 15         | 1365      | 2    | Square nut, 10 - 24                         | 50         | 18906    | 1    | Carburetor gasket                                    |
| 16         | * 02531   | 1    | Body channel welch plug                     | 51         | 2788004  | 2    | Stud, carburetor                                     |
| 17         | * 010588  | 1    | Body channel cup plug                       | 52         | 2A424167 | 1    | Manifold w/studs                                     |
| 18         | 015522    | 1    | Bypass tube                                 | 53         | 1876     | 1    | Spring pin   |
| 19         | 04784     | 1    | Choke friction ball                         | 54         | 1912     | 1    | Hex hd screw, 10 - 24 x 1/2                          |
| 20         | 08805     | 1    | Choke friction spring                       | 55         | 424168   | 1    | Gasket, manifold                                     |
| 21         | 015736    | 1    | Choke shaft and lever                       | 56         | 1298     | 8    | Rd hd screw, 6 - 32 x 1/4                            |
| 22         | 341384    | 1    | Retainer, choke rod                         | 57         | 424161   | 4    | Reed stop  |
| 23         | 015368    | 1    | Choke relief valve                          | 58         | 31160-1  | 4    | Reed   |
| 24         | 016161    | 1    | Choke relief valve spring                   | 59         | A424158  | 1    | Reed plate w/reeds, stops and screws                 |
| 25         | 015367    | 1    | Choke shutter                               | 60         | 286159   | 1    | Gasket reed plate                                    |
| 26         | 010280    | 1    | Choke shutter retainer screw and lockwasher | 61         | 8003     | 2    | Plain washer   |
| 27         | 013554    | 1    | Float                                       |            | 472061   | 1    | Carburetor complete CO-10A                           |
| 28         | * 013944  | 1    | Float lever pin                             |            | * 10006  | 1    | Gasket set, carburetor (not shown)                   |
| 29         | 015366    | 1    | Fuel bowl                                   |            | 10007    | 1    | Repair parts kit, carburetor (not shown)             |
| 30         | 015623    | 1    | Fuel bowl gasket                            |            |          |      | Asterisk (*) indicates contents of Repair Parts Kit. |
| 31         | 013945    | 1    | Fuel bowl retaining screw                   |            |          |      |  |
| 32         | 02510     | 2    | Fuel bowl retaining screw gasket            |            |          |      |  |
| 33         | 015520    | 1    | Idle mixture screw                          |            |          |      |  |
| 34         | * 011103  | 1    | Idle mixture screw spring                   |            |          |      |  |

# FUEL SYSTEM



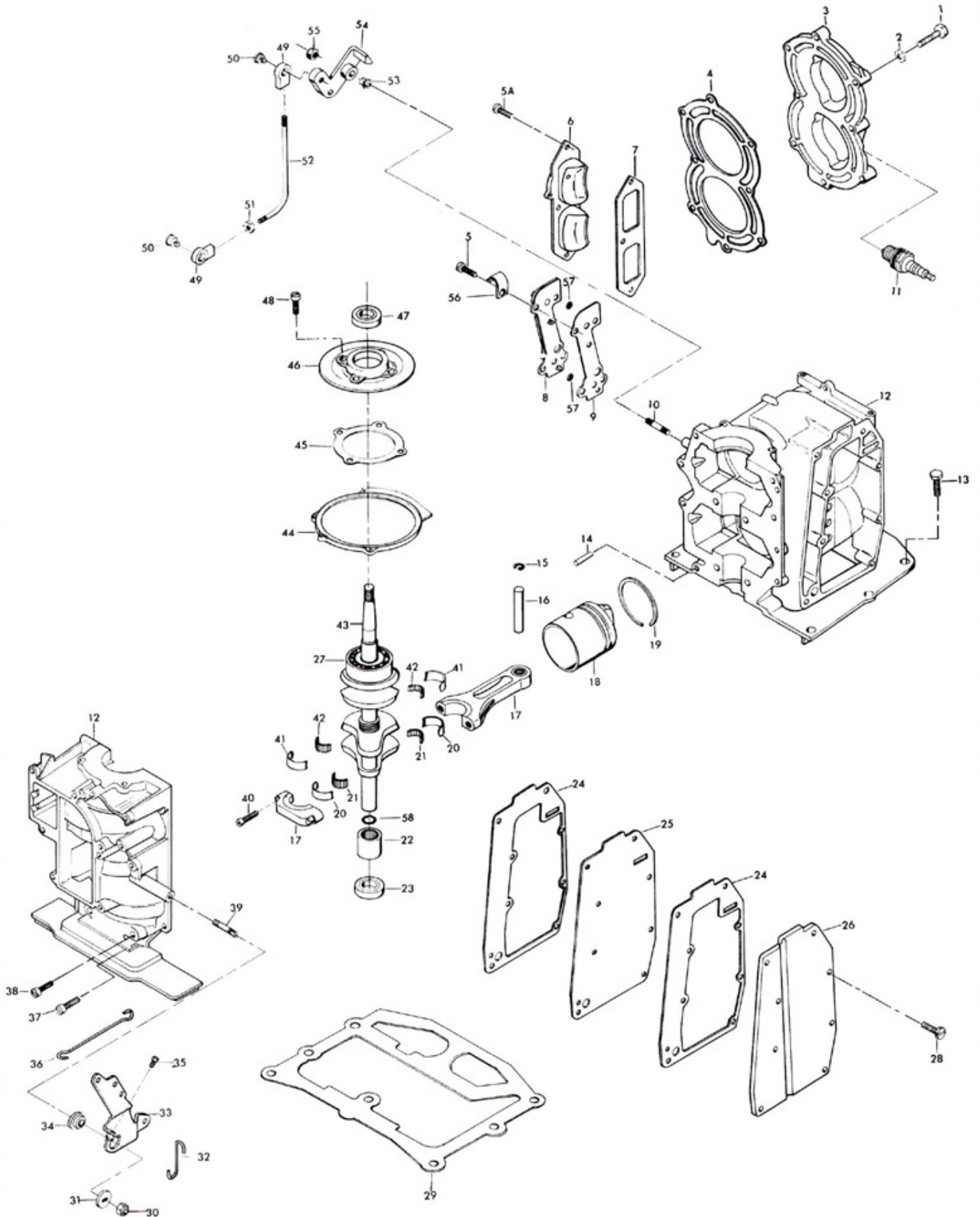
# Power Head

| ILLUS. NO. | PART NO.  | QTY. | DESCRIPTION  | ILLUS. NO. | PART NO.  | QTY. | DESCRIPTION                                 |
|------------|-----------|------|--|------------|-----------|------|---|
| 1          | 901938-1  | 8    | Screw, cylinder head                                     | 32         | 286445    | 1    | Link, magneto control rod                   |
| 2          | 8025      | 8    | Plain washer   | 33         | A286081-1 | 1    | Lever, magneto control                      |
| 3          | 286518    | 1    | Head, cylinder   | 34         | 183813    | 1    | Bearing, magneto control lever              |
| 4          | 286529-3  | 1    | Gasket, cylinder head                                    | 35         | 1504      | 1    | Fill hd screw, 1/4 - 20 x 1 1/4             |
| 5          | 1922      | 4    | Hex hd screw, 1/4 - 20 x 5/8                             | 36         | 286509    | 1    | Link, throttle cam                          |
| 5A         | 1502      | 3    | Hex cap screw, 1/4 - 20 x 5/8                            | 37         | *1107     | 8    | Fill hd screw, 1/4 - 20 x 3/4               |
| 6          | 286222    | 1    | Cover transfer port                                      | 38         | *1798     | 4    | Fill hd screw, 5/16 - 18 x 1 1/4            |
| 7          | 286223    | 1    | Gasket, transfer port cover                              | 39         | *286440   | 1    | Stud, magneto control lever                 |
| 8          | A429471   | 1    | Cover, cylinder drain w/check valves and screens         | 40         | *286634   | 4    | Screw, connecting rod                       |
| 9          | 492472    | 1    | Gasket, cylinder drain cover                             | 41         | *A286655  | 1    | Main bearing liner set (2 per set)          |
| 10         | *28004    | 1    | Stud, interlock lever                                    | 42         | *286571   | 1    | Roller set, main bearing (26 per set)       |
| 11         | S174227   | 2    | Plug, spark, L-4-J                                       | 43         | *A472018  | 1    | Crankshaft w/upper main bearing             |
| 12         | *A473010  | 1    | Cylinder w/crankcase cover, dowel pins, screws and studs | 44         | 73082     | 1    | Ring, magneto stator                        |
| 13         | 1823      | 6    | Hex cap screw, 5/16 - 18 x 1                             | 45         | 286277    | 1    | Gasket, crankshaft bearing cage             |
| 14         | 8559      | 2    | Dowel pin  | 46         | A286144   | 1    | Cage, crankshaft bearing w/seal             |
| 15         | *31410    | 4    | Retaining ring, piston pin                               | 47         | 346146    | 1    | Seal, crankshaft upper                      |
| 16         | *174017   | 2    | Pin, piston  | 48         | 1111      | 4    | Fill hd screw, 1/4 - 20 x 7/8               |
| 17         | *2A286016 | 2    | Rod, connecting w/cap and screws                         | 49         | 84035-2   | 2    | Bearing, interlock lever                    |
| 18         | *472015   | 2    | Piston   | 50         | 84026     | 2    | Swivel, interlock rod bearing               |
| 19         | *A472260  | 2    | Piston ring set (2 per set)                              | 51         | 1339      | 1    | Hex nut, 10 - 24                            |
| 20         | *A286229  | 2    | Connecting rod liner set (2 per set)                     | +52        | 492531    | 1    | Rod, interlock                              |
| 21         | *286228   | 2    | Roller set, connecting rod (26 per set)                  | 53         | 197813    | 1    | Bearing, interlock lever                    |
| 22         | *343014   | 1    | Bearing, crankshaft lower main                           | +54        | 492977    | 1    | Lever, interlock                            |
| 23         | *141118   | 1    | Seal, crankshaft lower                                   | 55         | 7008      | 1    | Stop nut, 1/4 - 20                          |
| 24         | 286154    | 2    | Gasket, exhaust cover                                    | 56         | 286772-1  | 1    | Hose clamp                                  |
| 25         | 286151    | 1    | Plate, exhaust   | 57         | 429811    | 2    | Screen                                      |
| 26         | 286152    | 1    | Cover, exhaust   | 58         | 461342    | 1    | Seal, driveshaft spline                     |
| 27         | *286028-1 | 1    | Bearing, crankshaft upper main                           |            | G1005-1   | 1    | Gasket set (not shown)                      |
| 28         | 1915      | 8    | Hex hd screw, 1/4 - 20 x 7/8                             |            | C472010   | 1    | Short block (not shown)                     |
| 29         | 286279-2  | 1    | Gasket, cylinder mounting                                |            | K737      | 1    | Includes all items marked with asterisk (*) |
| 30         | 1803      | 1    | Stop nut, 5/16 - 24                                      |            |           |      | Engine touch-up paint spray bomb            |
| 31         | 286282    | 1    | Washer   |            | K748      | 1    | Frost White Flat                            |
|            |           |      |  |            |           |      | Engine touch-up paint spray bomb            |
|            |           |      |  |            |           |      | Gold Enamel                                 |

\* Denotes new part number



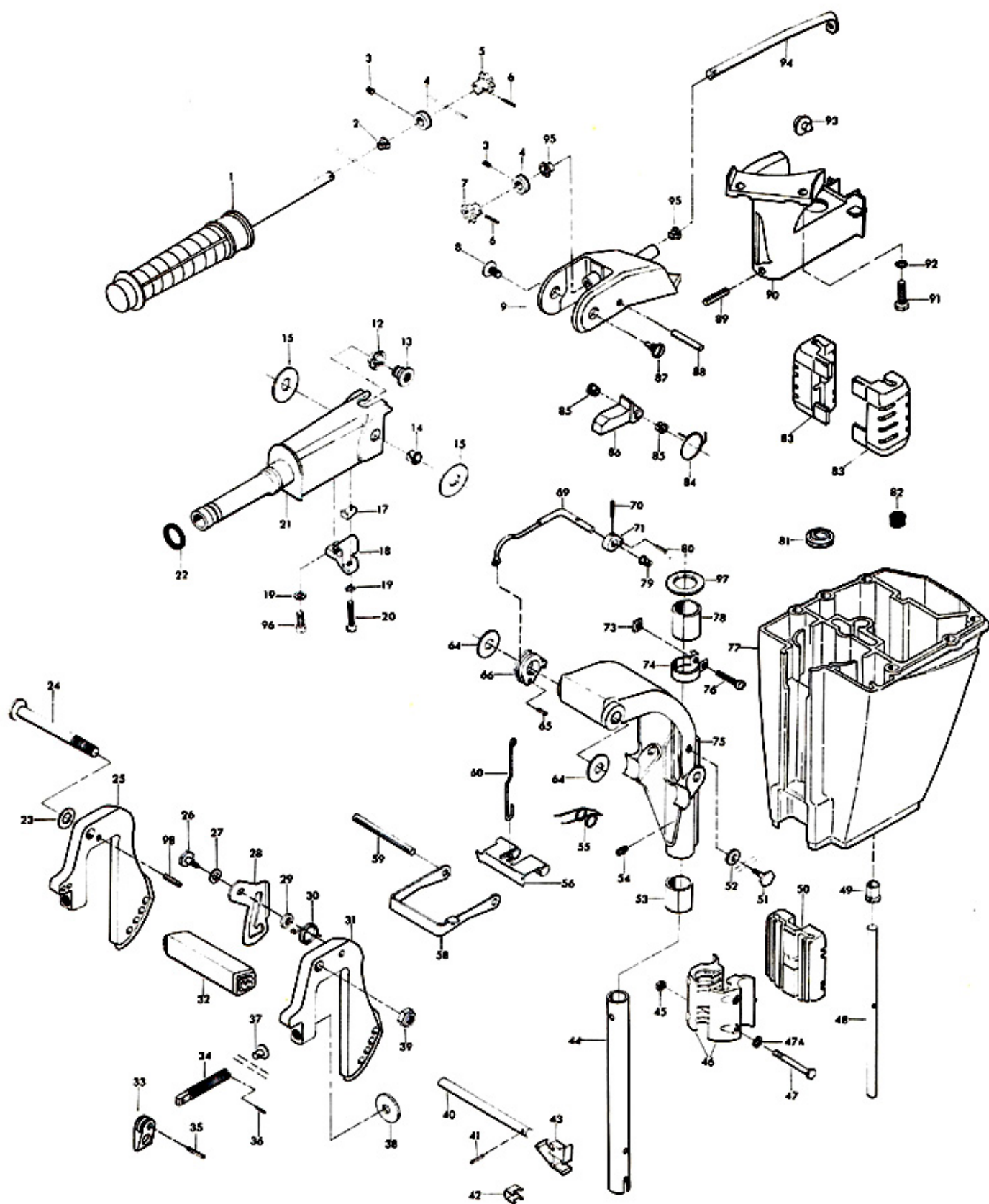
# POWER HEAD



# Motor Leg

| ILLUS. NO. | PART NO.  | QTY. | DESCRIPTION                                 | ILLUS. NO. | PART NO.  | QTY. | DESCRIPTION                                |
|------------|-----------|------|---|------------|-----------|------|--|
| 1          | A447137   | 1    | Grip, steering handle w/shaft               | 49         | 286914    | 1    | Sleeve water line                          |
| 2          | 85610     | 1    | Bearing                                     | 50         | 286346    | 1    | Shock mount lower                          |
| 3          | 1859      | 2    | Hex socket headless set screw               | 51         | 286422-1  | 1    | Tilt lock pivot                            |
| 4          | A343178   | 2    | Retainer                                    | 52         | 286451    | 1    | Spacer, tilt lock                          |
| 5          | S487815   | 1    | Gear, steering handle shaft                 | 53         | 286169    | 1    | Bearing, swivel bracket                    |
| 6          | 1978      | 2    | Spring pin                                  | 54         | 213274    | 1    | Grease fitting                             |
| 7          | S487815   | 1    | Gear, magneto control shaft                 | 55         | 286300    | 1    | Spring, reverse lock                       |
| 8          | 1799      | 1    | Truss hd screw, 5/16 - 18 x 5/8             | 56         | 286349    | 1    | Reverse lock                               |
| 9          | 392078    | 1    | Steering handle bracket                     | 58         | 286433    | 1    | Bracket shallow water drive                |
| 12         | 286818    | 1    | Bearing                                     | 59         | 1806      | 1    | Groove pin                                 |
| 13         | 286224    | 1    | Insert, steering handle pivot               | 60         | A341510   | 1    | Link, reverse lock                         |
| 14         | 197813    | 1    | Bearing                                     | 64         | 286286-1  | 2    | Washer, stern bracket                      |
| 15         | 286220    | 2    | Washer, steering handle                     | 65         | 1794      | 1    | Spring pin                                 |
| 17         | 341693    | 1    | Wedge, steering handle                      | 66         | 286827    | 1    | Reverse lock release lever                 |
| 18         | 341816    | 1    | Bearing, steering handle                    | 69         | A387742   | 1    | Lever, reverse lock intermediate           |
| 19         | 8058      | 2    | Int. tooth lockwasher                       | 70         | 8538      | 1    | Spring pin                                 |
| 20         | 1829      | 1    | Fill hd screw, 10 - 24 x 7/8                | 71         | 286364    | 1    | Lever, reverse lock                        |
| 21         | 392079    | 1    | Steering handle                             | 73         | 1608      | 1    | Square nut, 1/4 - 20                       |
| 22         | 53795-1   | 1    | Seal, steering handle grip dampener (large) | 74         | 286573-1  | 1    | Clamp, steering friction                   |
| 23         | 8039      | 1    | Plain washer                                | 75         | A286072-1 | 1    | Swivel bracket w/grease fitting            |
| 24         | 286037    | 1    | Stern bracket pivot bolt                    | 76         | 1820      | 1    | Fill hd screw, 1/4 - 20 x 1 3/8            |
| 25         | S286032   | 1    | Stern bracket stbd. w/clamp screw and foot  | 77         | 2A477133  | 1    | Motor leg w/water line and driveshaft seal |
| 26         | 286422-1  | 1    | Tilt lock pivot                             | 78         | 286169    | 1    | Bearing, swivel bracket                    |
| 27         | 1666      | 1    | Bowed spring washer                         | 79         | 197813    | 2    | Bearing                                    |
| 28         | 429541    | 1    | Tilt lock                                   | 80         | 1794      | 1    | Spring pin                                 |
| 29         | 286451    | 1    | Spacer, tilt lock                           | 81         | 901307-2  | 1    | Seal, driveshaft                           |
| 30         | 286544-1  | 1    | Spring, tilt stop                           | 82         | 286414    | 1    | Spring, leg water bracket                  |
| 31         | S286532   | 1    | Stern bracket port w/clamp screw and foot   | 83         | 286347    | 2    | Shock mount upper                          |
| 32         | 392647    | 1    | Carrying handle                             | 84         | 286868    | 1    | Spring, steering handle stop               |
| 33         | 424075    | 2    | Handle, clamp screw                         | 85         | 197813    | 2    | Bearing, steering handle stop              |
| 34         | A298073-1 | 2    | Clamp screw w/foot                          | 86         | 286490    | 1    | Steering handle stop                       |
| 35         | 8554      | 2    | Spring pin                                  | 87         | 286080    | 1    | Screw, steering handle pivot               |
| 36         | 8536      | 2    | Spring pin                                  | 88         | 1807      | 1    | Groove pin                                 |
| 37         | 66480     | 2    | Stud clamp screw                            | 89         | 1805      | 1    | Spring pin                                 |
| 38         | 24074     | 2    | Clamp screw foot                            | 90         | A286582   | 1    | Steering arm w/spring pin                  |
| 39         | 7005      | 1    | Stop nut, 3/8 - 16                          | 91         | 1502      | 2    | Hex cap screw, 1/4 - 20 x 5/8              |
| 40         | A286113   | 1    | Lock bar w/handle and spring                | 92         | 8060      | 2    | External tooth lockwasher                  |
| 41         | 8540      | 1    | Spring pin                                  | 93         | 286539    | 1    | Bumper                                     |
| 42         | 286461    | 1    | Spring, lock bar handle                     | 94         | 447838    | 1    | Magneto control shaft                      |
| 43         | 286114    | 1    | Lock bar handle                             | 95         | 307818    | 2    | Bearing                                    |
| 44         | 286019    | 1    | Kingpin                                     | 96         | 1475      | 1    | Fill hd screw, 10 - 24 x 1/2               |
| 45         | 1341      | 2    | Hex nut, 1/4 - 20                           | 97         | 286011    | 1    | Washer, swivel bracket                     |
| 46         | 286956    | 2    | Bracket, shock mount lower                  | 98         | 8538      | 1    | Spring pin                                 |
| 47         | A1844     | 2    | Hex bolt, 1/4 - 20 x 2 3/8                  |            | 392894-1  | 1    | Steering handle indicator (not shown)      |
| 47A        | 8083      | 2    | Spring lockwasher                           |            | 392387    | 1    | Decal, tilt release (not shown)            |
| 48         | 286244    | 1    | Water line                                  |            |           |      |  |

# MOTOR LEG





# Gear Housing

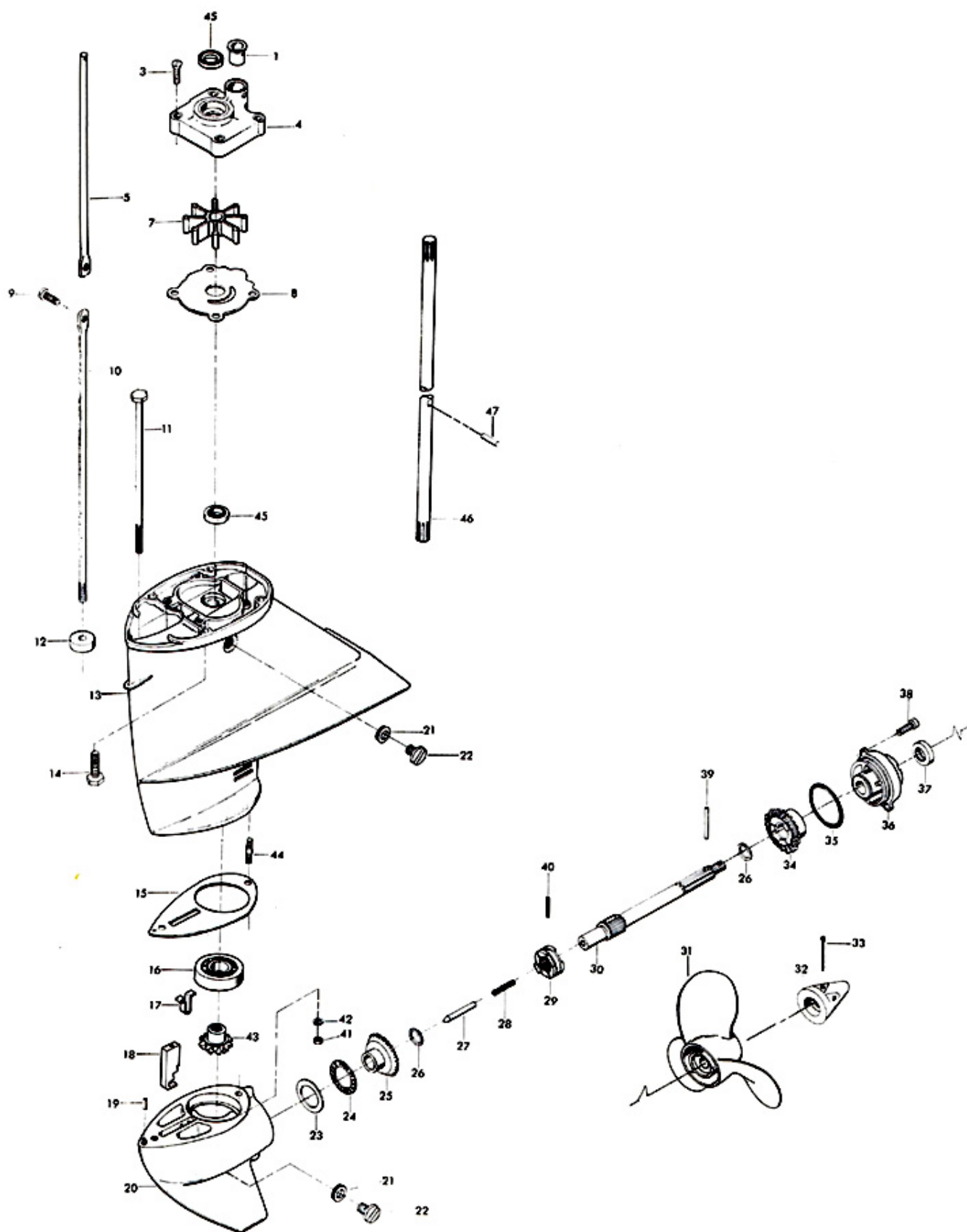
| ILLUS. NO. | PART NO. | QTY. | DESCRIPTION   |
|------------|----------|------|---|
| 1          | 55914    | 1    | Seal, inlet water line                              |
| 3          | 1150     | 4    | Flat hd screw, 1/4 - 20 x 1 1/8                     |
| + 4        | A495060  | 1    | Water pump body w/seal                              |
| 5          | 286615   | 1    | Gear shift rod upper                                |
| 7          | 436065   | 1    | Water pump impeller                                 |
| 8          | 341562   | 1    | Water pump back plate                               |
| 9          | 1976     | 1    | Socket hd screw w/lockwasher, 10 - 24 x 1/2         |
| 10         | 286705   | 1    | Gear shift rod lower                                |
| 11         | 1800     | 1    | Hex bolt, 1/4 - 20 x 7                              |
| 12         | 286618-1 | 1    | Seal, gear shift rod lower                          |
| 13         | A456554  | 1    | Gear housing upper w/bearing, seal, plug and washer |
| 14         | 430732   | 4    | Hex hd screw, 1/4 - 20 x 1                          |
| 15         | 286555   | 1    | Gasket, gear housing                                |
| 16         | 127910-2 | 1    | Bearing bevel pinion thrust                         |
| 17         | *286895  | 1    | Spring cam detent                                   |
| 18         | *286721  | 1    | Clutch shift cam                                    |
| 19         | *8553    | 1    | Spring pin  |
| 20         | *A286054 | 1    | Gear housing lower w/bearing, plug and spring pin   |
| 21         | *8077    | 2    | Nyltite washer                                      |
| 22         | *50109   | 2    | Gear housing plug                                   |
| 23         | *286903  | 1    | Race, propeller shaft bearing                       |
| 24         | *286901  | 1    | Bearing, radial, propeller shaft                    |
| 25         | *A456023 | 1    | Bevel gear front w/bearing                          |
| 26         | *456717  | 2    | Thrust washer                                       |
| 27         | *286728  | 1    | Clutch shift pin                                    |
| 28         | *409719  | 1    | Clutch spring                                       |
| 29         | *A456521 | 1    | Clutch  |
| 30         | *456098  | 1    | Propeller shaft                                     |
| 31         | P408     | 1    | Propeller (Accessory Item)                          |
| 32         | A286094  | 1    | Propeller nut w/cotter pin                          |
| 33         | 1846     | 1    | Cotter pin  |
| 34         | *A456662 | 1    | Bevel gear rear w/bearing                           |
| 35         | *286305  | 1    | Seal, prop shaft bearing cage                       |
| 36         | *A343298 | 1    | Propeller shaft bearing cage w/bearing and seal     |
| 37         | *346118  | 1    | Seal, propeller shaft                               |
| 38         | *1802    | 2    | Fill hd screw, 1/4 - 20 x 9/16                      |
| 39         | A324101  | 1    | Propeller pin, pack of 3                            |
| 40         | *1970    | 1    | Spring pin  |
| 41         | *1490    | 1    | Hex nut, 1/4 - 20                                   |
| 42         | *8063    | 1    | Spring lockwasher                                   |
| 43         | *A286266 | 1    | Gear, bevel pinion w/bearing                        |
| 44         | 286008   | 1    | Stud, gear housing rear                             |
| 45         | 901307-2 | 2    | Seal, water pump and driveshaft                     |
| 46         | 343128   | 1    | Driveshaft  |
| 47         | 901563   | 1    | Water pump impeller drive pin                       |
|            | C456054  | 1    | Lower gear housing complete (not shown)             |

Includes all items marked with an asterisk (\*)

+ Denotes new part number



# GEAR HOUSING



# Specifications

HORSEPOWER -- 15 B. I. A. Certified Brake H. P. at 5100 R. P. M.

ENGINE -- Two-Cycle, Twin Cylinder, Alternate Firing.

BORE AND STROKE -- 2 - 3/16" x 1 3/4".

DISPLACEMENT -- 13.15 Cubic Inches.

CARBURETOR -- Float Feed.

CONNECTING ROD -- Die Cast Aluminum - Cased Needle Bearings at Piston Pin. Uncased Needle Bearing With Steel Liners at Crankshaft.

CRANKSHAFT -- Forged Nickel Steel - Ball Bearing At Upper Main. Uncased Needle Bearing With Steel Liners at Center Main.

PROPELLER SHAFT AND DRIVESHAFT -- Stainless Steel, Hardened, Ground and Polished.

PROPELLER -- Aluminum Alloy - 8 1/8" Dia. x 8 1/4" Pitch, Right Hand Rotation.

COOLING -- Water Cooled Positive Displacement Type Water Pump.

TRANSOM HEIGHT -- 15"

WEIGHT -- 58 Lbs.

TILT LOCK -- Positive Tilt Lock, Permits Engine to Remain In Tilted Position When Not In Use.

RECOMMENDED OPERATING RANGE -- 4600 - 5600 R. P. M.

# Lubrication Chart

## PART NAME

Starter pinion gear  
Starter spool bearings  
Throttle cam follower  
Magneto control shaft bearing  
Steering handle pinion gear  
Steering handle bevel gear  
Reverse lock  
Clamp screws  
Stern bracket pivot bolt  
Gear housing  
Fuel line coupler release ring

## TYPE OF LUBRICANT

Riverside Two-Cycle Engine Oil  
Riverside Two-Cycle Engine Oil  
Riverside Two-Cycle Engine Oil  
Riverside Two-Cycle Engine Oil  
EP-All Purpose Chassis Lubricant  
EP-All Purpose Chassis Lubricant  
Riverside Two-Cycle Engine Oil  
Riverside Two-Cycle Engine Oil  
Riverside Two-Cycle Engine Oil  
Wards Sea King Hypoid Outboard Gear Oil  
Riverside Two-Cycle Engine Oil

## HOW OFTEN

If starter operation becomes sluggish  
If starter operation becomes sluggish  
Twice each season, oftener if required  
Twice each season, oftener if required  
Twice each season, oftener if required  
Twice each season, oftener if required  
Twice each season, oftener if required  
Twice each season, oftener if required  
Twice each season, oftener if required  
Twice each season, oftener if required  
Every 30 hours, oftener if required  
Twice each season, oftener if required

GREASE FITTINGS -- Grease Fittings Are Provided At Critical Points Where Bearing Surfaces Are Not Exposed Using An Automotive Type Grease Gun and Lubricant, Grease Twice Each Season or Oftener if Required.

# Special Adjustments

BREAKER POINT GAP -- .020".

SPARK PLUG -- Champion L-4-J, Gap .030".

ADJUSTING STEERING TENSION -- Steering Tension Can Be Adjusted by Turning the Steering Friction Adjusting Screw, Illustration 76, Page 11 in the Direction Required.

POINT OF THROTTLE OPENING -- Set the Position of the Throttle Cam Follower, Illustration 48, Page 7, so that the Throttle Shutter in the Carburetor Will Be CLOSED and all Slack REMOVED from the Linkage, When the Throttle Cam Follower is on the Throttle Pick-Up Point Mark on the Throttle Cam Plate.

FLYWHEEL NUT -- Torque to 40-50 Foot Pounds.